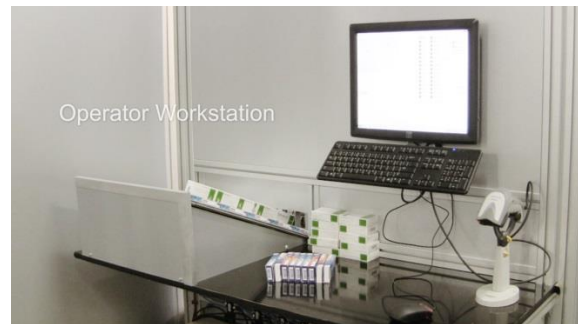


## RoboPharma AF30 Autofill systems

### Introduction

The RoboPharma AF30 AutoFill unit has been developed especially for high end solutions in big hospitals. It is a standalone, batch wise filling unit that can be installed in combination with RoboPharma RP20, RP30 and RP50 robots. It can be installed as one unit or multiple cooperative units.

After installing AutoFill, the Robot keeps all her functions, including the manual filling possibility.



### The RoboPharma AF30 AutoFill is

#### 1. Multifunctional and accurate.

The integrated Laser Real Stock Count Function, Pack Size Measurement Function and Controlled Entrance Function make it a highly multifunctional and accurate system. It supports the use of 2d barcodes, expiry date function and track and trace functions.

#### 2. Fast.

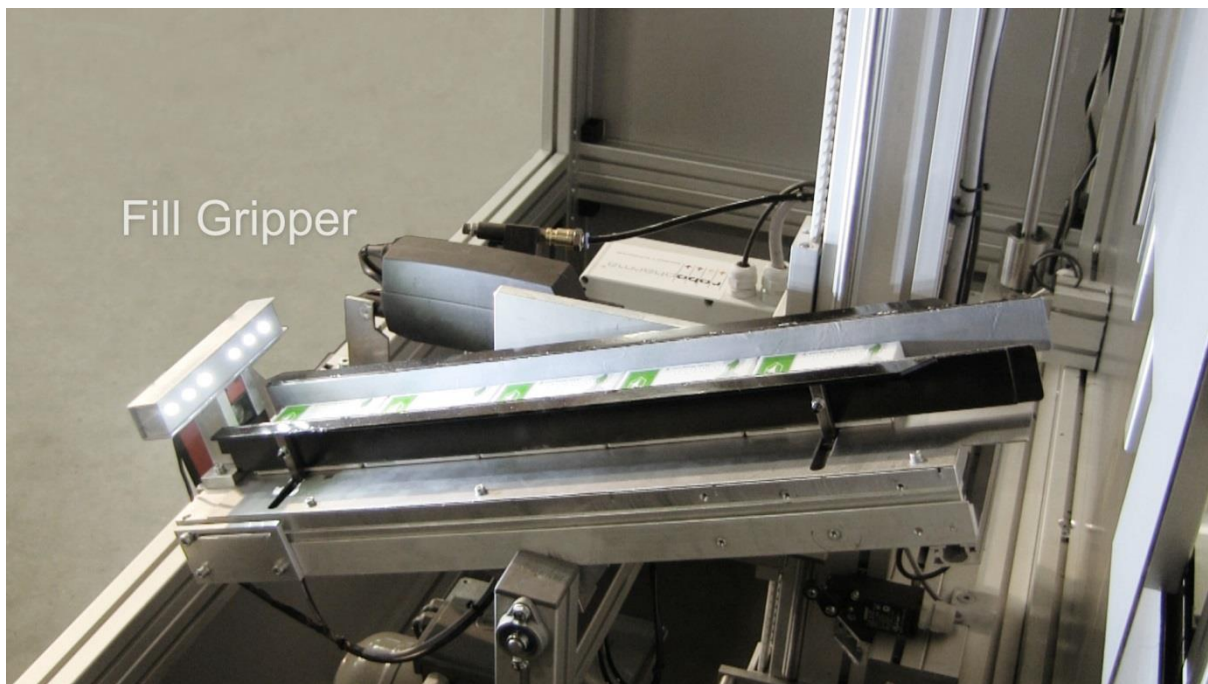
With a filling capacity of approx. 3.000 packs per hour per unit it is a fast filling system.

#### 3. Supporting high density storage.

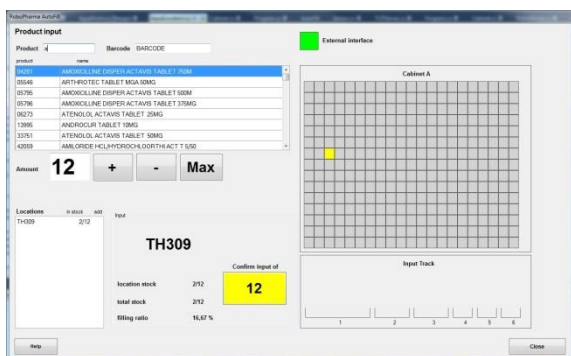
The special gripper construction and positioning method support High Density Storage.

### Movie clip

<http://www.robopharma.com/en/products/robopharma-af30-autofill-unit/>



Fill Gripper



### RoboPharma AF30 AutoFill models

Autofill Type	Position of filling station seen from dispenser filing side	Suitable for RoboPharma Dispenser	Dispenser number of Channels	Gripper Length mm	Number of grippers	Number of filling tracks	Filling speed approx. packs/ hour
AF30-CN500-L-GL600-NG2-FT6	Left	RP10, RP20, RP30, RP50	500	600	2	6	3000
AF30-CN500-R-GL600-NG2-FT6	Right	RP10, RP20, RP30, RP50	500	600	2	6	3000
AF30-CN1000-L-GL600-NG2-FT6	Left	RP10, RP20, RP30, RP50	1000	600	2	6	3000
AF30-CN1000-R-GL600-NG2-FT6	Right	RP10, RP20, RP30, RP50	1000	600	2	6	3000
AF30-CN1500-L-GL600-NG2-FT6	Left	RP10, RP20, RP30, RP50	1500	600	2	6	3000
AF30-CN1500-R-GL600-NG2-FT6	Right	RP10, RP20, RP30, RP50	1500	600	2	6	3000
AF30-CN1800-L-GL600-NG2-FT6	Left	RP10, RP20, RP30, RP50	1800	600	2	6	3000
AF30-CN1800-R-GL600-NG2-FT6	Right	RP10, RP20, RP30, RP50	1800	600	2	6	3000